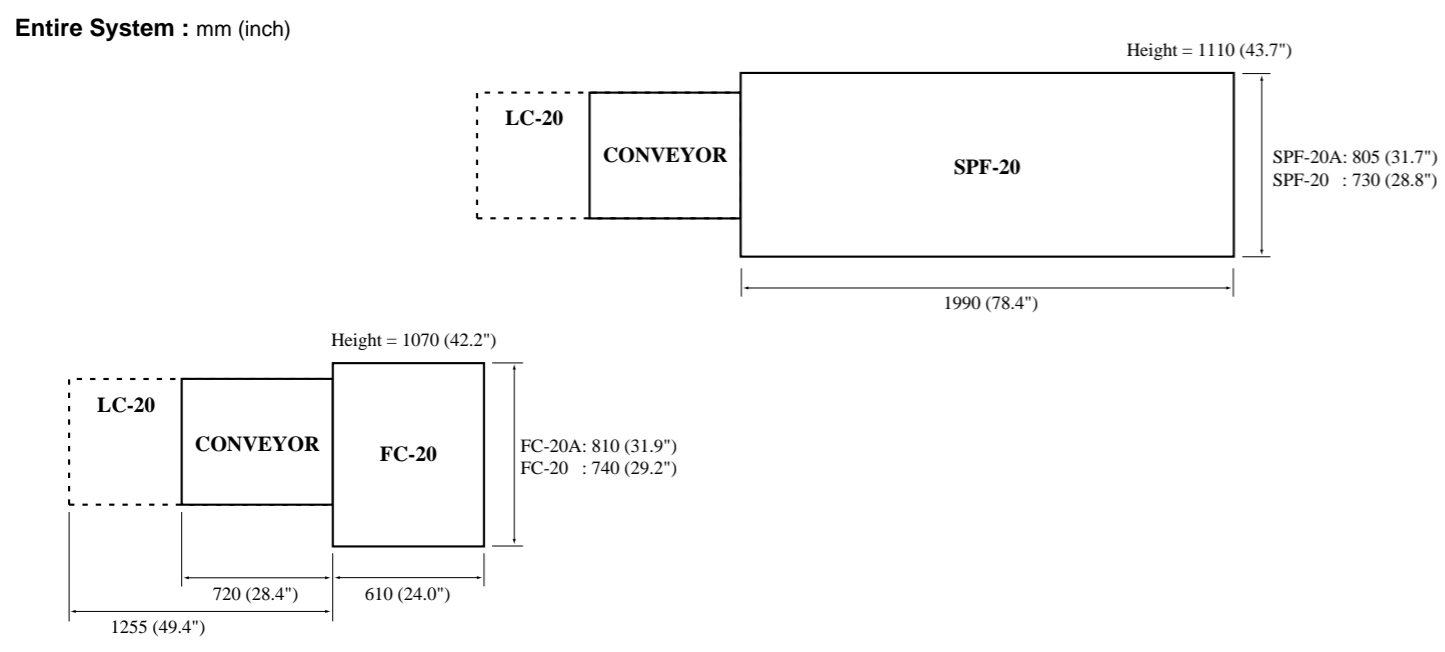


Major Specifications

SPF-20 series			
Sheet Size	Max. 350 x 500 mm (13.8" x 19.7") Min. 120 x 180 mm (4.7" x 7.1")	Production Speed	3,200 booklets / hr. (A3: VAC-100 20 sheets)
Finish Size	Max. 250 x 350 mm (9.8" x 13.8") Min. 90 x 120 mm (3.5" x 4.7")	Power	3-Phase 200 V 50/60 Hz 3-Phase 220 V 60 Hz Single Phase 230 V 50 Hz
Stitching Thickness	Max. 4 mm (0.16") (only for side stitch)	Power Consumption	450 W
Stitching & Folding Thickness	Max. 2 mm (0.08")	Motors	200 W x 1 / 100 W x 1 / 60 W x 1 / 15 W x 1
Thickness	24 sheets of 60 gsm	Machine Weight	SPF-20A: 490 kg (1,080 lb) SPF-20 : 470 kg (1,035 lb)
Stitch Distance	73 to 160 mm (2.9" to 6.3")		
Stitching Wire	Standard: No.25 (0.5 mm) (0.020") Option : No.28 (0.4 mm) (0.016")		

FC-20 series			
Book Size (Before Trim)	Max. 250 x 350 mm (9.8" x 13.8") Min. 90 x 120 mm (3.5" x 4.7")	Production Speed	3,200 booklets / hr. (A4)
Finish Size	Max. 250 x 350 mm (9.8" x 13.8") Min. 85 x 120 mm (3.3" x 4.7")	Power	3-Phase 200 V 50/60 Hz 3-Phase 220 V 60 Hz Single Phase 230 V 50 Hz
Trimming Length	Max. 20 mm (0.79")	Power Consumption	200 W
Trimming Thickness	Max. 4 mm (0.16")	Motors	400 W x 1 / 60 W x 1 / 25 W x 1
	50 sheets of 60 gsm	Machine Weight	FC-20A: 240 kg (529 lb) FC-20 : 230 kg (507 lb)

Installation Space



Options

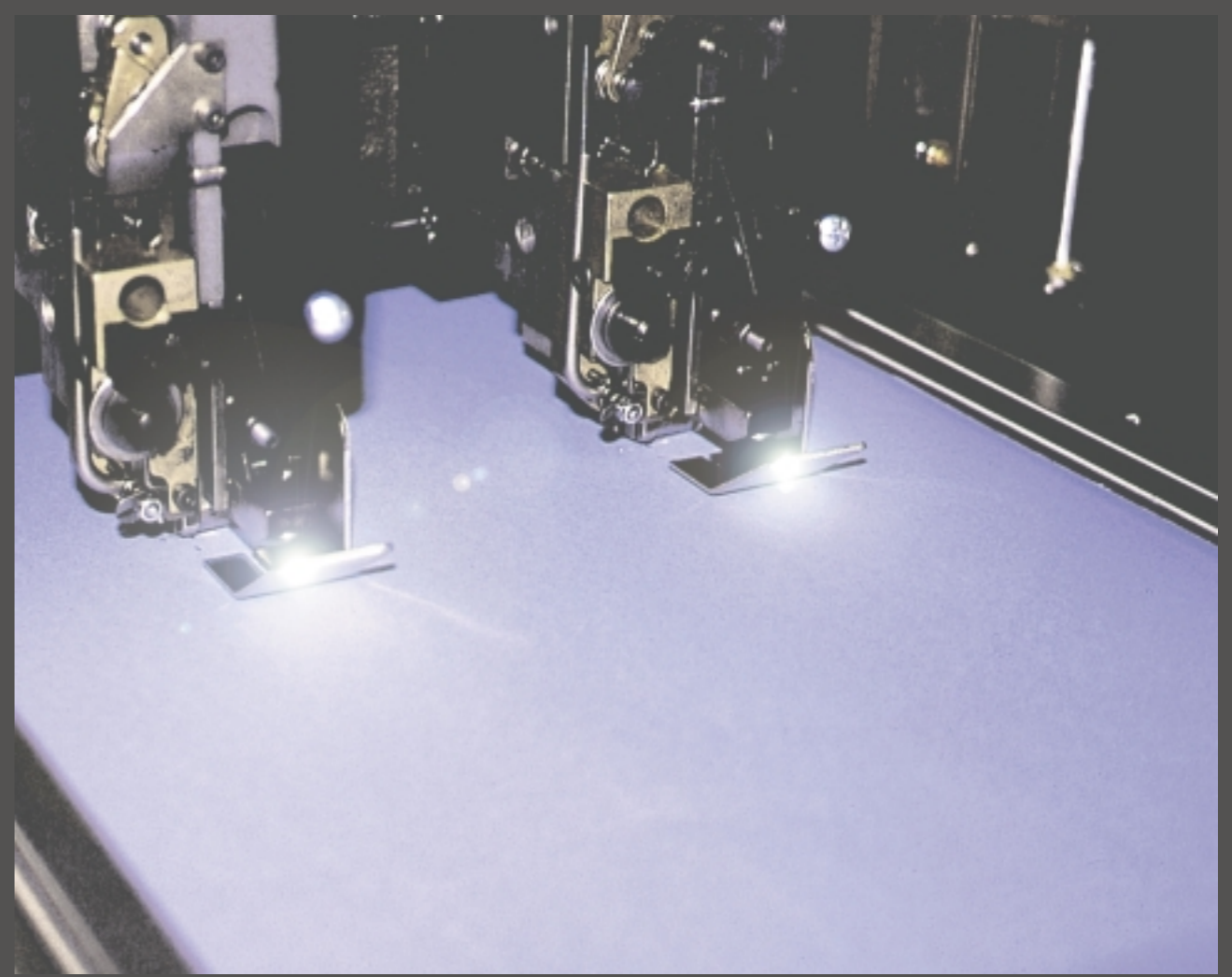
- Long Conveyor : LC-20
- Preset Kicker : PK-20
- Paper Insertion Knife Unit : PN-20

The machine design and specifications are subject to change without any notice.

Distrubted by

SPF-20A / FC-20A

SPF-20 / FC-20



STATE-OF-THE-ART TECHNOLOGY
FOR
THE SCIENCE OF BOOKBINDING

Horizon
B i n d t r o n i c s

Horizon SPF-20/FC-20 series

Quality Bookletmaking from CD to A4
Simple Setup and Quick Job-Changeover

Combined with a Horizon Collator, SPF-20 / FC-20 series form an integrated in-line booklet-making system capable of collating, stitching, folding, and fore-edge trimming in one pass.

• EASY OPERATION

The model SPF-20A/FC-20A features fully automated set up with the touch-button input on display. The interactive GUI guides you the necessary set up procedure and operation. The model SPF-20/FC-20 is manual type bookletmaker. It's operation, job changeover and adjustment are all performed with handles and dials which are easily accessed from the outside at the operating side of the machine.

• MULTI FUNCTION

SPF-20 series : a precision-built multi-functional system capable of stitching and folding a wide variety of paper sizes ranging from 120 x 180 mm (7.1" x 4.7") to 350 x 500 mm (13.7" x 19.6"). The SPF-20 series bookletmaker are designed to handle four different job pattern, stitch and fold, side/top stitch, corner stitch and fold only with simple turn of the dial.

FC-20 series : a quality fore-edge trimmer which can be connected to the SPF-20 series bookletmaker to produce, professionally finished booklets.

• HIGH SPEED OPERATION

When combined with the VAC-100, the SPF-20/FC-20 series bookletmaking systems are capable of producing more than 3,000 high-quality A3 / 11" x 17" size booklets per hour.

• MEMORIZE FREQUENT JOB SETTINGS

The SPF-20A/FC-20A can memorize up to 12 different jobs that are run frequently. For example, sheet size and finishing format are stored in the system memory for quick restart of the regular job.

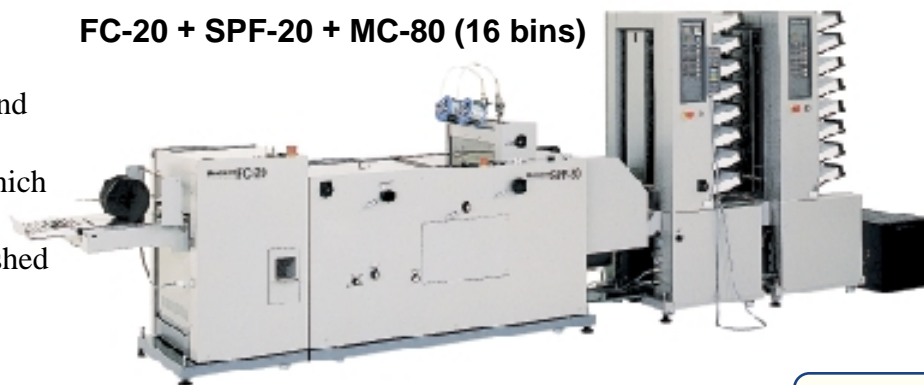
• FLEXIBILITY

The SPF-20 series can be connected with either one of Horizon Air-Suction Collators (VAC-100, MC-80, TC-8 and TAC-8) or Horizon Friction Collators (HAC-120 and HAC-15).

• HAND-FEED

You can operate the SPF-20 series as an independent bookletmaker using a hand-feed table without disconnecting the SPF-20 series from the collator.

FC-20 + SPF-20 + MC-80 (16 bins)

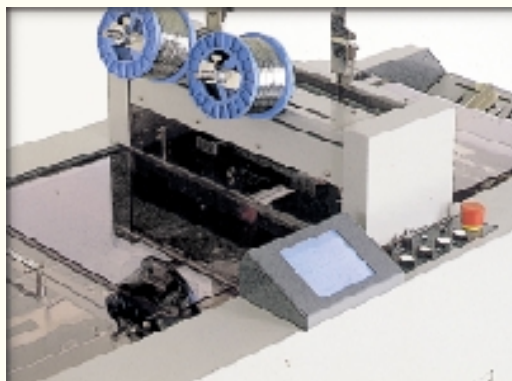


FC-20A + SPF-20A + VAC-100 (20 bins) + PJ-77R



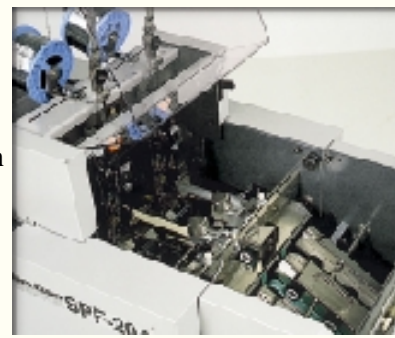
• User Friendly Operation

- The SPF-20A is equipped with touch-button LCD (liquid crystal display). All the setting, sheet size and job pattern, even micro-adjustment while operation can be done on this display. (SPF-20A)
- The operation control in the SPF-20 allows you to start and stop the collators.
- The operation speed can be also adjusted in indefinitely-variable steps.
- The sheet-jogging mode can be selected: either single jog or continuous jog.



• Neat Jog and Heavy - Duty Stitcher

- The tail and side joggers neatly align collated sheets.
- The stitching position can be easily adjusted according to the size of sheets to be run with simple dial adjustment.
- The "Hohner" stitcher heads feature a steady performance and longer machine life.



• High - Precision Folding

- The following three setups can be easily adjusted by each corresponding dials from the outside of the operating side of the machine: sheet skewing in the folding section, knife height, and opening between the fold-plates.
- The roller gap can be easily adjusted in five steps according to the booklet thickness.
- The large diameter of the folding and press rollers produces more folding pressure, providing crisp tight folds.

• Quality Trimming

- Adjusting the length between the spine and fore-edge of the booklet to be handled is all you have to do for the trimmer setup.
- Positive in - feed, selfregister and heavy duty clamp and spine pressure insure a high quality finish with unmatched reliability.
- Unique spring loaded upper blade automatically adjust to the



- lower blade extending blade life.
- Trimmings are blown down into the dust box by air so that no chips are left in the cutting area.
- A total counter and a resetable production counter are provided as standard.

• Neat Delivery on Conveyor

- Either booklets or side stitched sets can be delivered to the same delivery conveyor without any adjustment and job-changeover.
- Variable delivery belt advancement insures smooth delivery and easy handing regardless of book thickness.

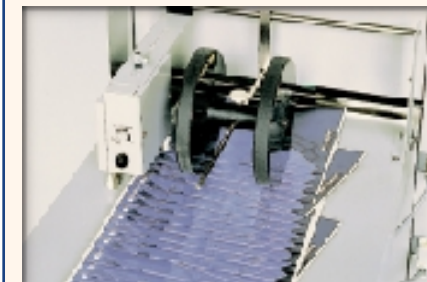
• Option

• LC-20 : Long Conveyor



The LC-20 is a long conveyor for quantity production. This conveyor gives you enough time for packing of the booklets.

• PK-20 : Preset Kicker



The PK-20 is a preset kicker unit for separation of booklets. According to the preset number, a booklet is skewed for identification of the separation.

• PN-20 : Paper Insertion Knife Unit

The PN-20 is a retrofit kit for single separate sheet insertion. When your customer requires single sheet insert in the middle of the folded booklets, this unit ensures the single sheet in position.