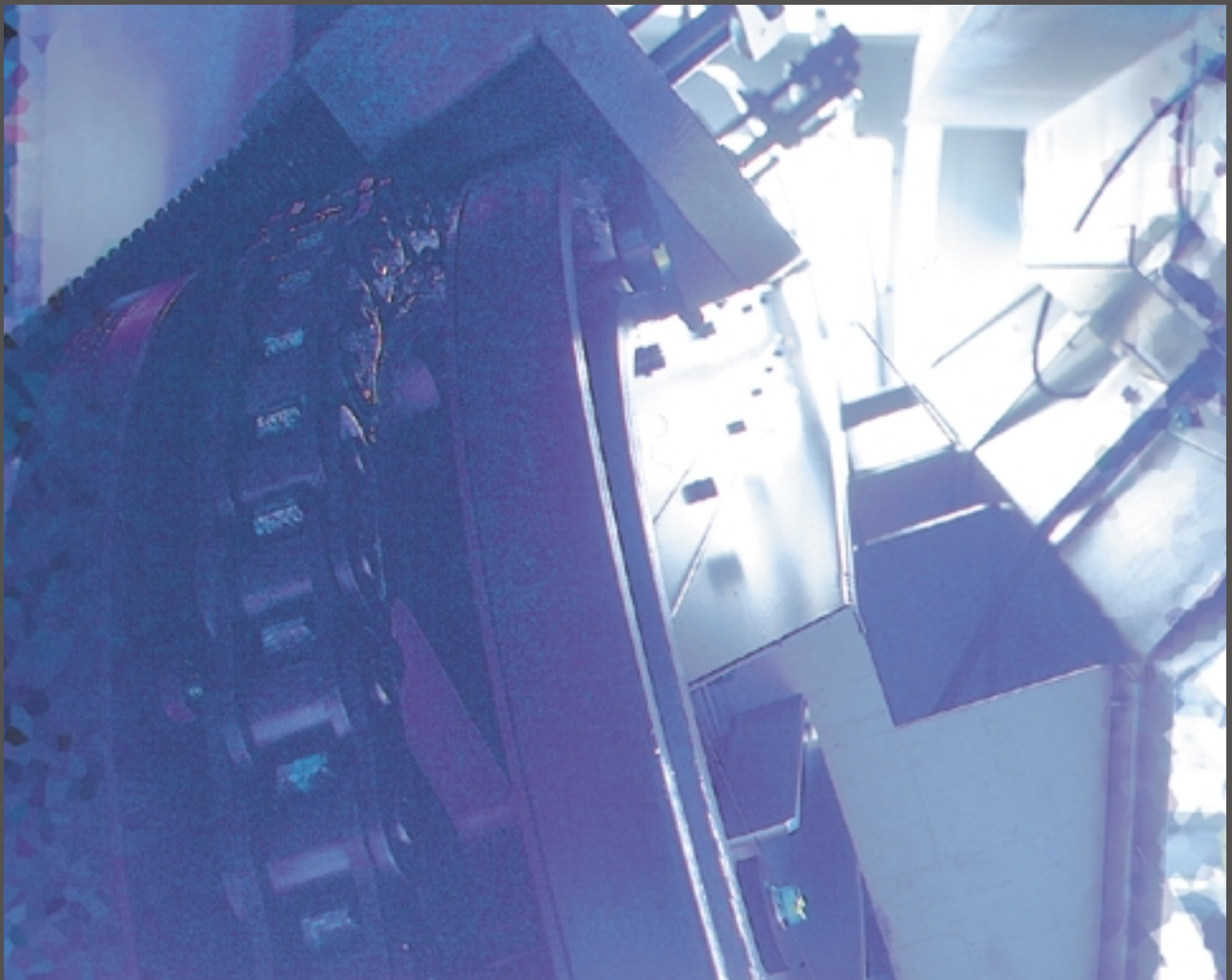


PERFECT BINDER

BQ-460SC

CF-460V



STATE-OF-THE-ART TECHNOLOGY
FOR
THE SCIENCE OF BOOKBINDING

Horizon
B i n d t r o n i c s



Features

1. A rigid machine frame and heavy duty binding mechanism ensure consistent high quality binding.
2. All machine controls are positioned at the front of the binder, making it easy for the operator to control and monitor all machine operations.
One operator can easily manage the entire book production process.
3. A newly developed side gluing device applies the correct amount of glue to the front and back of the book block.
4. Book titles can be positioned on the spine with ease by simply turning the adjusting knob. This insures precise micro-positioning of book titles with minimal effort.
5. The suction cover feeder handles a wide variety of cover stocks. (105 to 300 gsm / 90 to 260 kg).



Quality



Simplicity



Productivity

Horizon BQ-460: Perfect Binder

The BQ-460 perfect binder produces consistently high quality perfect bound books at maximum production speeds of 1,350 books per hour. All necessary setups can be performed through a touch-screen panel and easy-access setup mechanical controls.

The BQ-460 can be expanded to a complete perfect binding and trimming system by adding the SL-40 Cooling Conveyor and HT-70 Three-knife Trimmer.



LCD Touch-Screen Panel

Setups are performed through an LCD touch-screen display, which also serves as a trouble monitor to show the location of any faults.



Carriage Clamp

A rigid clamping system holds the book block firmly in position during the milling and nipping process to produce a quality finished book. The binding process starts automatically when the book block is properly presented into the clamp at the feeding position.



Milling Station

The milling section is comprised of a high-speed milling and roughening blade which mills the spine to prepare it for optimum glue penetration. A simple lever lets you select milling or non-milling modes based on job requirement.



Gluing Station

The first application drum drives glue into the spine while the second application drum forms an optimum glue film on the spine. Horizon's uniquely designed cam mechanism accurately controls the glue cut-off at the head and foot of the book.

An advanced side-gluing device applies a thin glue film to the sides of the book block near the spine.



Nipping Station

The cover-registering table is mechanically matched to the stopping position of the clamp, so that covers are always accurately positioned onto the book block. A micro positioning knob allows quick and easy positioning of text on the book spine. Positive mechanical force applied to the spine and sides of the book ensure strong, square binds.



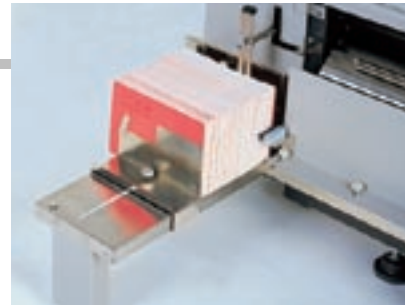
Cover Feeder

The suction cover feeder is able to handle a wide variety of cover stocks ranging from 105 to 300 gsm / 90 to 260 kg. The feeder detects any misfeeds or double-feeds, and stops the binding process immediately. The cover feeder is equipped with a scoring unit to provide sharp spine and hinge score for a professional binding finish.



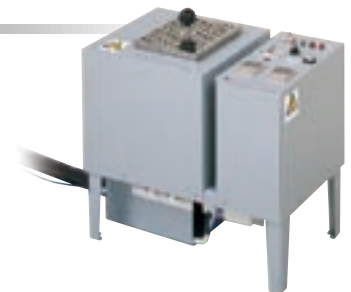
Delivery Section

Finished books are delivered and stacked on a vertical conveyor located below the operator's station. The operator can check the finished book quality while a new book is being placed into the clamp.



Pre-Melt Tank PM-8 (Option)

An optional 8 liter pre-melt tank is available to provide a constant supply of glue. This relieves the operator from having to resupply glue during operation, and it insures that all adhesive is maintained at the same temperature to produce consistently high quality books.

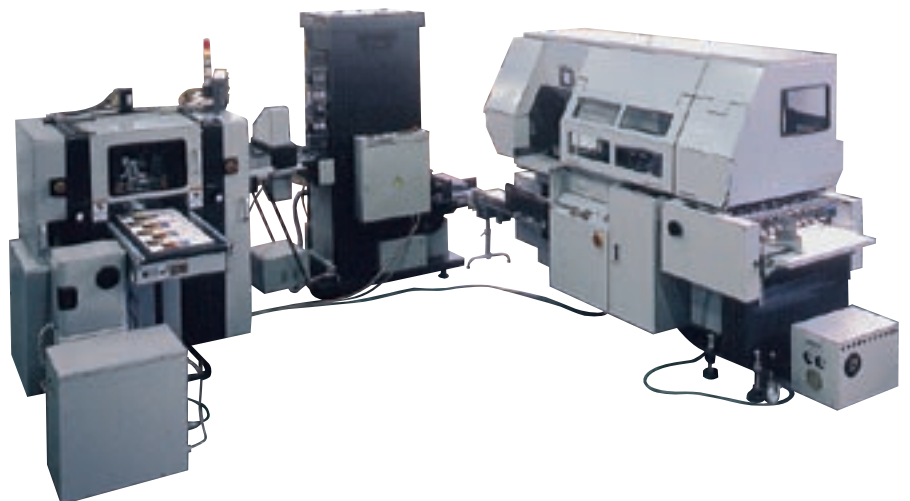


In-line Binding System

The BQ-460 can be expanded to a complete perfect binding and trimming system by adding the SL-40 Cooling Conveyor and HT-70 Three-knife Trimmer.

Horizon's uniquely designed SL-40 minimizes the space required for an in-line system.

The quality-engineered HT-70 delivers sharp, square three-side trimming for perfectly finished books.

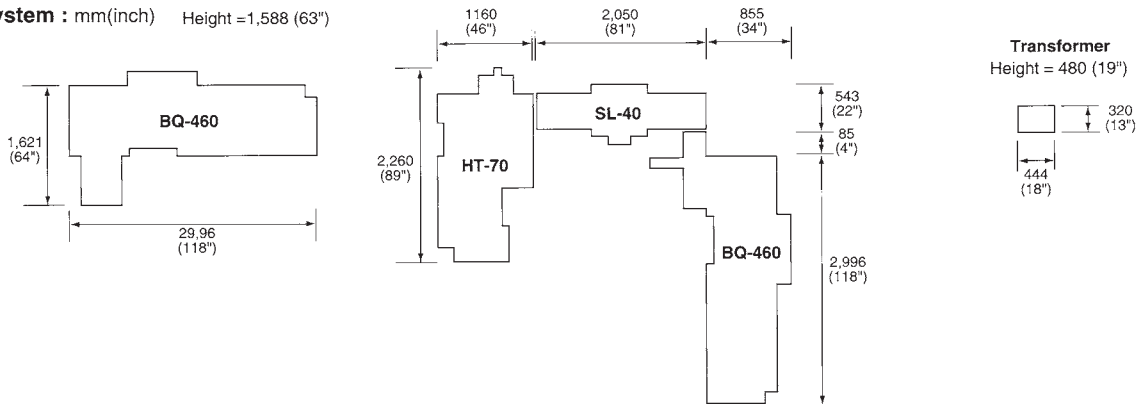


Major Specifications

Model Number of Clampers Book Size Binding Thickness Cover Size Cover Pile Height Cover Weight Range	BQ-460SC/CF-460V 4 110 x 145 mm to 320 x 320 mm (4.3" x 5.7" to 12.5" x 12.5") 1to 55 mm (0.04" to 2.1") 145 x 260 (230) mm to 320 x 650mm (5.7" x 10.2"(9") to 12.6" to 25.5") *230mm/(9") requires small size spring. 200 mm (7.8") Normal Paper 80 gsm or up Coated paper 104 to 300 gsm	Production Speed Voltage/Frequency Power Consumption Motors Heater Machine Dimension Machine Weight	Max. 1,350 books/hr. 3-Phase 200 V/ 50/60 Hz 3-Phase 220 V / 60 Hz 3-Phase 400 V / 50 Hz 50 Hz : 5.2 kw 60 Hz : 5.9kw 2.2 kw x 1, 0.75 kw x 1, 0.4 kw x 1, 0.2 kw x 1, 90 w x 1, 40 w x 1, 25 w x 1 2.4 kw x 1 2,996 x 1,621 x 1,588 mm (118" x 64" x 63") 1,500 kg (3,308 lb)
Model Cutter Knife Motion Max.Untrimmed Size Max.Trimmed Size Min.Trimmed Size Standard Trimmed Size (T:Portrait Y:Landscape) Lift Mechanical Speed Clamping System	HT-70 Mechanical Diagonal Cut 330 x 330 mm (12.9" x 12.9") 300 x 300 mm (11.8" x 11.8") 100 x 142 mm (4" x 5.6") A4T,A4Y,A5T,A5Y,A6T,B5T,B5Y,B6T and Irregular sizes 50.8 mm (2") (Max.Pile height for a batch of trimming) 1,000 cycles / hour (A4T) Hydraulically operated	Clamping Pressur Trimming Accuracy Knife Material Power Power Consumption Machine Dimension Machine Weight	Steplessly variable adjustment within the range from 150 to 1,000 kg Within 0.5 mm (0.02") Tungsten Carbide 200 V,50/60 Hz,3-Phase 220 / 240 V,3-phase 60 Hz, 400 / 3-Phase,50/60 Hz 3 kw 2,260 x1,160 x 1,600 mm (89" x 45.7" x 63") 1,530 kg (3,374 lb)
Model Book Size Delivering Speed	SL-40 148 x 210 mm to 235 x 318 mm (5.8" x 8.3" to 9.25" x 12.5") 1 book / bin 700 / h 2 books / bin 1,200 / h 3 books / bin 1,500 / h	Bin Pile Height Bin Numbers Cooling Time Power Source Machine Weight	3 mm to 50 mm (0.12" x 2") 18 (14 bins are used for cooling) 2 minutes (when 3 books are piled on one bin) 200 V / 50 Hz, 500W 200 V / 60 Hz, 600W 386 kg (852 lb)

Installation Space

Entire System : mm(inch) Height = 1,588 (63")



Option

Safety Beam (Factory Option)

Area sensor at clamper section for greater operator safety.

Weekly Timer (T-450)

Automatic power ON timer to warm up melt tank for quick start in the morning.

The machine design and specifications are subject to change without any notice.

Distributed by

