

MS-10A  
DRILL

# CHALLENGE PRODUCTS



## MS-10A MULTI-SPINDLE DRILL





## MS-10A Heavy Duty Power Paper Drill for High-Production Drilling

### Features

- High Production Multi-Hole Drilling
- Drills Up To 10 Holes In One Stroke
- Maximum Drill Bit Diameter ½"
- 2½" Drilling Capacity
- Powerful Hydraulic Operation
- Easy Head Adjustment
- Variable Speed Stroke Control
- Automatic Paper Chip Removal
- Rugged Cast Iron Construction
- Flexible Side Guide Adjustments
- Multi-Splined Drive Shaft
- Adjustable Backgauge
- Lighted Work Surface

### Production Drilling

The MS-10A is flexible. It quickly drills any job up to 10 holes in one stroke, so big drilling jobs can be completed quickly and economically. It's easy to adjust for a variety of multiple hole patterns — simply add and adjust drilling heads by sliding them along the splined shaft. A special three-drill head is available with drill bits on 1" centers.

### Powerful Hydraulic Drilling

A touch to the foot pedal brings the drilling heads down to the table under hydraulic power. The paper is drilled and the heads are released automatically and returned to the starting position. The speed of the heads on the downward stroke is adjustable, providing you with the most-efficient drilling and production operations on all types of jobs and paper stocks.

### Built To Last

The MS-10A features all cast iron construction, and is quality built by highly trained technicians with years of experience. The MS-10A is designed and built to stand up to years of heavy-duty drilling use. It is a drill you can depend on to get your jobs done — productively and on time.

### Standard Equipment

- Two Backgauge Filler Blocks
- Twelve 1¼" x 6" Wood Drilling Blocks
- Manual Drill Sharpener
- Paper Chip Disposal Drawer
- Tool Drawer and Kit



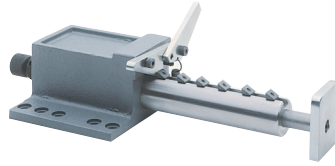
# MS-10A MULTI-SPINDLE DRILL

## MS-10A Accessories



### Standard Drilling Head

The standard drilling head has a 2½" lift capacity and comes with one ¼" and one ⅝" hollow drill bit. (Additional bits and other sizes are available.) The MS-10A handles up to ten standard drilling heads, giving you top production speed.



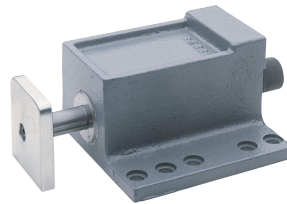
### Auto Trip Side Guide

This side guide automatically releases after drilling, allowing the lift to be moved to the next position. Mostly used for closely spaced multi-hole drilling, this guide accepts fixed gauges and comes with six adjustable stops.



### Triple Drilling Head

The triple drilling head has a 2½" lift capacity. This special head comes with three ¼" and three ⅝" hollow drill bits. Bits are mounted on fixed 1" centers. (Additional bits and other sizes are available.)



### Right Hand Side Guide

You can use this guide alone for single lift drilling, use it with another guide for drilling two lifts in one stroke, or use it for drilling a lift on the left and right side guides in two strokes.



### Large Hole Drill Head

The large hole drill head is part of the large hole conversion kit, which allows drilling of ⅝" to 1½" holes. The MS-10A handles two large hole heads with a center-to-center range of 5" to 17¾" and a backgauge range from 0 to 2⅝".



### Plastic Drilling Blocks

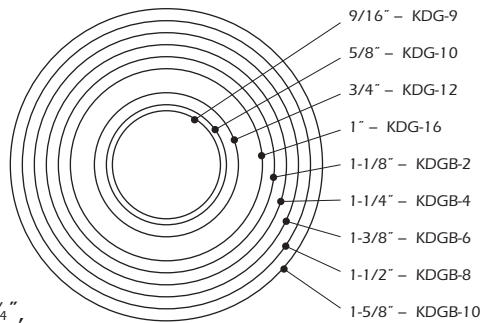
Plastic drilling blocks (shown) are recommended for large hole drilling jobs. Wood blocks should be used with standard drill bits.



### Hollow Drill Bits

2" drilling capacity hollow drill bits come in 13 sizes from ⅛" to ½" in diameter.

2½" drilling capacity hollow drill bits come in four sizes: ¼", ⅝", ⅜", and ½" (shown as blue in chart below). Drill bit part numbers are listed below size in chart below.



### Large Hole Drilling

Illustration at left shows actual sizes of large hole drill bits available from Challenge. Drill bit part numbers are listed after sizes for easy reference.

## Additional Accessories

### Extra Side Guide Stops














Additional side guide stops are used with the automatic trip side guide. They are easy to place in the guide slot and adjust with Allen screws.

### Extension Side Tables

Left and right side tables (22" x 48" each) provide additional working area. Order left table, right, or both.

### Two-Hand Controls

Dual hydraulic power buttons must be pressed simultaneously to activate drilling.

						
1/8" CD-2	5/32" CD-52	3/16" CD-3	7/32" CD-72	1/4" CD-4	17/64" CD-174	9/32" CD-92
				CD-4-2-1/2		
Holes are shown actual size; blue indicates sizes available in 2-1/2" length.						
						
1/2" CD-8	7/16" CD-7	13/32" CD-132	3/8" CD-6	11/32" CD-112	5/16" CD-5	CD-5-2-1/2
CD-8-2-1/2						



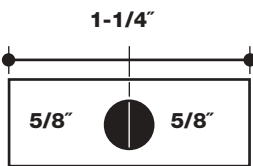
# MS-10A DRILL

## Experience & Service

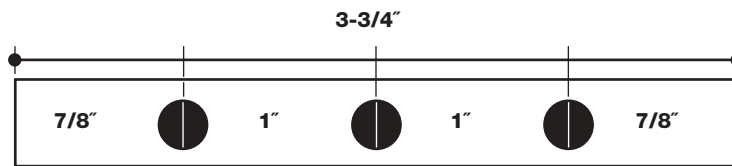
Over 70 years ago Challenge pioneered the industry's first paper drilling machines. Today, Challenge builds on this experience with the latest drilling technology. Count on your Challenge dealer for qualified service and original-equipment Challenge parts. The MS-10A is part of the Challenge team of cutters, drills, folders, and other bindery equipment. Challenge products have been crafted with pride in the U.S.A. since 1870.

## Drilling Head Configurations

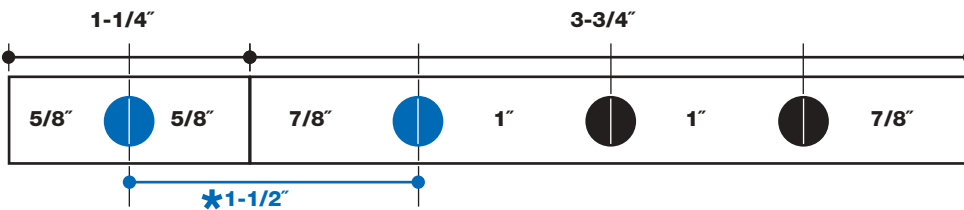
### Standard Head



### Triple Head

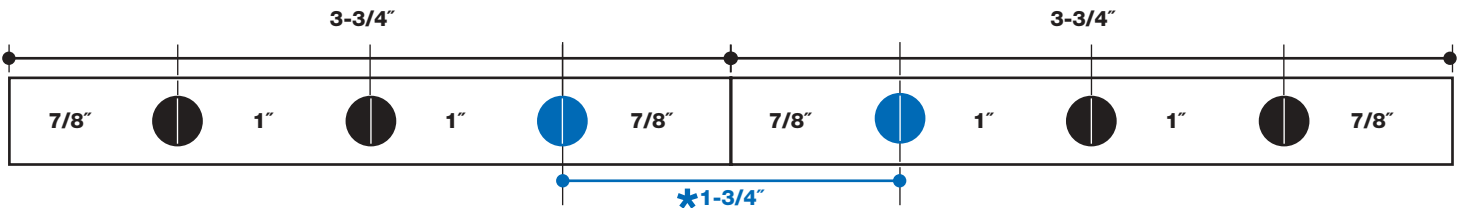


### Standard + Triple Head Combination



**★NOTICE:** When drill heads are used in combination, center-to-center hole dimensions of adjacent drill bits are greater than the center-to-center hole dimensions within each drill head.

### Triple + Triple Head Combination



## Specifications

### DRILLING

Maximum Number Of Drill Heads	10 Heads
Drill Sizes Available* (2" capacity)	1/8" to 1/2" / 3 - 13 mm
Drill Sizes Available (2 1/2" capacity)	1/4" to 1/2" / 6 - 13 mm
Center-to-Center Maximum	21" / 53 cm
Distance of Heads Minimum**	1 1/4" / 3.2 cm
Minimum Distance Between Holes	
With Adjustable Stops	3/8" / 9.5 mm
With Fixed Gauges	1/4" / 6 mm
Maximum Drilling Capacity	2 1/2" / 6.35 cm
Strokes Per Minute (adjustable)	18 to 26
Backgauge Adjustment	0 to 9" / 0 - 23 cm
Vertical Adjustment of Individual Heads	1/4" / 6 mm

### DIMENSIONS

Table Size	24" x 36" / 61 x 91 cm
Table Height	38" / 96.5 cm
Overall Height	60" / 152 cm
Floor Space Needed	35" x 40" / 89 x 102 cm
Net Weight (approximate)	1350 lbs / 675 kg
Shipping Weight (approximate)	1660 lbs / 830 kg

### ELECTRICAL

**Standard:** 3 Phase, 60 Hz, AC. Pump: 3/4 HP. Spindle Motor: 3 HP. 208 Volts/14 Amps, 230 Volts/12.8 Amps (service size 20 Amps), or 460 Volts/6.6 Amps (service size 15 Amps).

**Optional:** 1 Phase, 60 Hz, AC. Pump: 3/4 HP. Spindle Motor: 3 HP. 208 Volts/26.5 Amps or 230 Volts/24.2 Amps. Service size 40 Amps.

\* Special large hole drilling (up to 1 1/2" in diameter) is possible with the conversion kit.

\*\* Three-hole drilling heads are available for drilling 3 holes on 1" centers.

*This machine must be wired to an individual line through a disconnect box with the proper voltage at the machine.*

*Challenge reserves the right to make changes to any product or specification without notice and without incurring responsibility to existing units.*

© Challenge is a registered trademark of The Challenge Machinery Company.

For more information on this and other Challenge products, call your local Challenge dealer or for the dealer nearest you contact:

**The Challenge Machinery Company**  
1433 Fulton Avenue, Grand Haven, MI 49417-1594 U.S.A.

**616-842-8300**

[www.ChallengeMachinery.com](http://www.ChallengeMachinery.com)