

# CHALLENGE HEAVY-DUTY PAPER CUTTERS

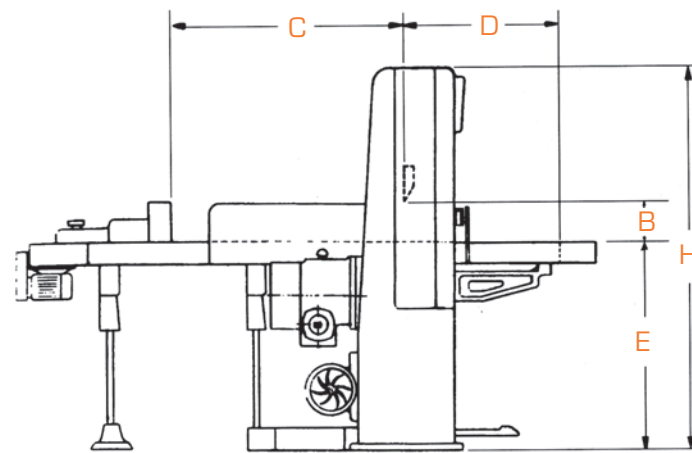
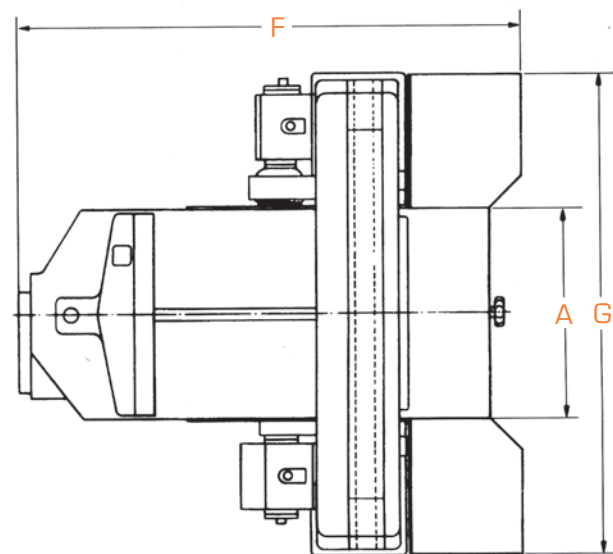


# CHALLENGE HEAVY-DUTY

# PAPER CUTTERS

## SPECIFICATIONS

	1550	1320	1160	1016	860
<b>CUTTING</b>					
Maximum Cutting Width	A 61 - 1/32"   1550 mm	51 - 31/32"   1320 mm	45 - 43/64"   1160 mm	40"   1016 mm	33 - 55/64"   860 mm
Maximum Clamp Opening	B 6 - 1/2"   165 mm	6 - 1/2"   165 mm	6 - 1/2"   165 mm	6 - 7/64"   155 mm	6 - 7/64"   155 mm
Feed Depth: Max.	C 61 - 1/32"   1550 mm	51 - 31/32"   1320 mm	45 - 43/64"   1160 mm	40"   1016 mm	33 - 55/64"   860 mm
Min.	15/16"   24 mm	15/16"   24 mm	15/16"   24 mm	15/16"   24 mm	15/16"   24 mm
Cutting Speed (r.p.m.)	42	42	42	42	42
Drive System	Double End Pull	Double End Pull	Double End Pull	Double End Pull	Single End Pull
Clamp Pressure	440-9921 lb   200-4500 kg	440-9921 lb   200-4500 kg	440-9921 lb   200-4500 kg	440-9921 lb   200-4500 kg	440-9921 lb   200-4500 kg
Backgauge Speed: Max.	65 ft./min   20 m/min	65 ft./min   20 m/min	65 ft./min   20 m/min	65 ft./min   20 m/min	65 ft./min   20 m/min
Min.	3 ft./min   1 m/min	3 ft./min   1 m/min	3 ft./min   1 m/min	3 ft./min   1 m/min	3 ft./min   1 m/min
Minimum Cut: w/False Clamp	2.95"   7.5 cm	2.95"   7.5 cm	2.95"   7.5 cm	2.95"   7.5 cm	2.95"   7.5 cm
w/ Out False Clamp	1.1"   2.74 cm	1.1"   2.74 cm	1.1"   2.74 cm	1.1"   2.74 cm	1.1"   2.74 cm
<b>DIMENSIONS</b>					
Table Space: in front of knife	D 28 - 11/32"   720 mm	27 - 9/16"   700 mm	28 - 11/32"   720 mm	25 - 19/32"   650 mm	25"   635 mm
Table Height	E 35 - 7/16"   900 mm	34 - 1/16"   865 mm	35 - 7/16"   900 mm	34 - 1/16"   865 mm	34 - 1/16"   865 mm
Overall Length (w/side tables)	F 125 - 13/64"   3180 mm	109 - 1/16"   2770 mm	104 - 17/32"   2655 mm	95 - 9/32"   2420 mm	80 - 1/8"   2035 mm
Overall Width	G 122 - 7/16"   3110 mm	103 - 15/16"   2640 mm	95 - 9/32"   2420 mm	92 - 33/64"   2350 mm	78 - 11/32"   1990 mm
Overall Height	H 63 - 25/32"   1620 mm	63 - 25/32"   1620 mm	63 - 25/32"   1620 mm	62 - 19/32"   1590 mm	60 - 7/16"   1535 mm
Net Weight (approximate)	12,125 lbs   5,500 kg	10,582 lbs   4,800 kg	9,259 lbs   4,200 kg	8,796 lbs   3,990 kg	5,379 lbs   2,440 kg
Shipping Weight (approximate)	13,184 lbs   5,980 kg	11,052 lbs   5,013 kg	10,135 lbs   4,597 kg	9,615 lbs   4,361 kg	6,050 lbs   2,744 kg
<b>ELECTRICAL</b>					
Motor	7.5 H.P., 208/230 Volts 60 Hz, 3 Phase AC, 50 Amps Service size 60 Amps	5 H.P., 208/230 Volts, 60 Hz, 3 Phase, AC, 25 Amps Service size 30 Amps.	5 H.P., 208/230 Volts, 60 Hz, 3 Phase, AC, 25 Amps Service size 30 Amps.	5 H.P., 208/230 Volts, 60 Hz, 3 Phase, AC, 25 Amps Service size 30 Amps.	5 H.P., 208/230 Volts, 60 Hz, 3 Phase, AC, 25 Amps Service size 30 Amps.



DYM - II 1550

Challenge reserves the right to make changes to any product or specification without notice and without incurring responsibility to existing units.  
 ©Challenge is a registered trademark of The Challenge Machinery Company. All rights reserved.

ADV-012/2000/GPCO/0509



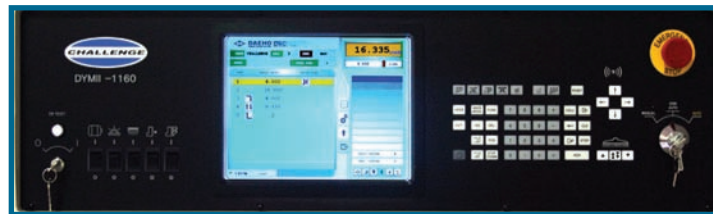
**THE CHALLENGE MACHINERY COMPANY**  
 6125 Norton Center Dr. Norton Shores, MI 49441 USA  
 Phone: 231.799.8484 Fax: 231.798.1275 www.challengemachinery.com

ASSURANCE YOU MADE THE RIGHT DECISION

# CHALLENGE HEAVY-DUTY PAPER CUTTERS

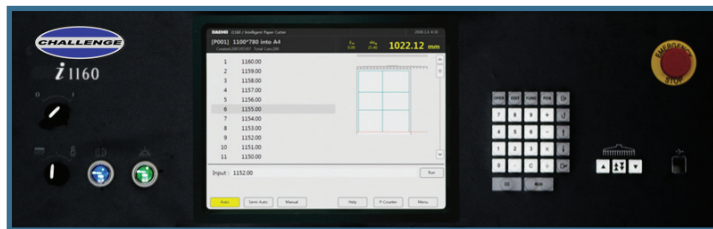
Mechanical drive paper cutters from Challenge Machinery provide precise, trouble-free operation at an incredible value - exactly what you've come to expect from us!

## GEAR-DRIVEN PAPER CUTTERS



### DYM-II CONTROL PANEL

A standard 12.1" color touch-screen control panel allows even the most novice bindery personnel to intuitively navigate the menu-driven interface. Full internal self-diagnostics with error checking and a large storage capacity are at-home in any environment.



### iCUTTER CONTROL PANEL

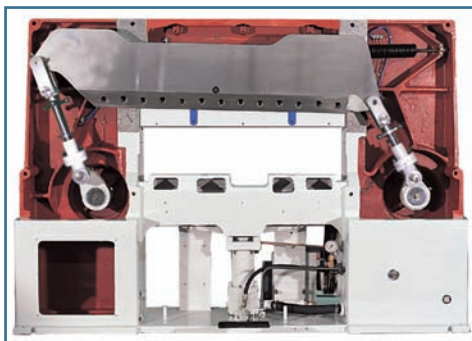
The available iCUTTER interface provides the platform for CIP/JDF integration. The larger 15" color touch-screen control panel gives the operator more job information at a glance. Machine maintenance reminders, complete self-diagnostics and error-detection, and advanced job storage/retrieval capabilities will bring your bindery into the next era of cutting proficiency.

### PRECISE BACKGAUGE POSITIONING

Challenge Heavy-Duty paper cutters have a very rigid and stable backgauge due to the linear rail design that lifts the backgauge and guides it along without undue stresses on the lead screw. The leadscrew utilizes a ball screw design, known for its reliability and accuracy at any speed.

### SAFETY

A variety of standard safety features are found on Challenge Heavy-Duty paper cutters such as two-hand, timed and non-repeating cut buttons, monitored knife safety latch, infrared safety beams, and shear bolt detection. This allows our machines to carry the CE certification, assuring you of the highest level of operation security.



### FOUNDATION OF STRENGTH

The rugged design of the Challenge mechanical-drive paper cutters starts with its cast-iron and steel construction. This heavy frame and knife bar design reduces twisting to provide consistent cutting accuracy.



### KNIFE CHANGING SYSTEM

The Challenge Heavy-Duty cutter is designed for easy knife changes. This procedure allows for one operator to safely remove and install the blade in as little as ten minutes.



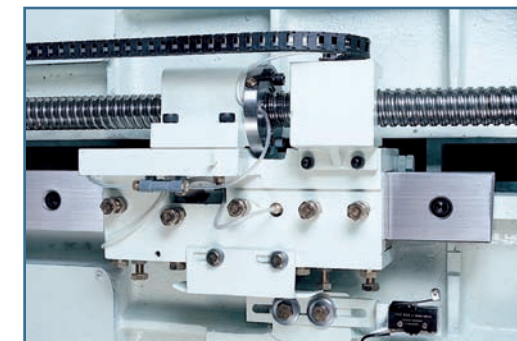
### MPG (MICRO -ADJUSTING) HANDWHEEL

An electronically-controlled micro-adjust handwheel provides precision adjustments of the backgauge and can be turned OFF during machine operation.



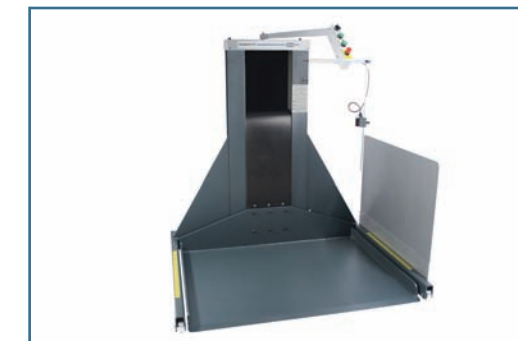
### CUTTER FEATURES

- Manual/semi-automatic and automatic operation modes
- AC servomotor, ball screw and linear guide
- Adjustable clamping pressure
- Table light/optical cut line indicator
- Hard chromed air cushion table
- Easy knife change system
- Electro-magnetic clutch and brake system
- Double end pull knife drive system (single end pull on 860)
- Shear bolt for cutting system protection
- Two hand cut control with non-repeat safety system
- Infrared safety light curtain
- Closed rear table



### BACKGAUGE

The high-speed backgauge glides effortlessly and precisely across the table due to the linear guiderail and AC drive ball-screw.



### MATERIAL HANDLING

The PowerLift II provides powerful lifting/lowering capability for pallet sizes up to 55" x 41". Additionally, our complete cutting solution (lift, paper jogger with air removal system and automatic unloading machine) can provide increased productivity and reduced operator fatigue.